

# **PRONTO® .035"** Extraction Catheter

The power and simplicity of thrombus aspiration for large vessels



# The power and simplicity of thrombus aspiration

A complete system  
of thrombus from arteri

## Maximized thrombus aspiration with rate control

Unobstructed aspiration lumen with an in-line roller clamp to control the rate of aspiration



*450% greater effective lumen than Pronto V3*

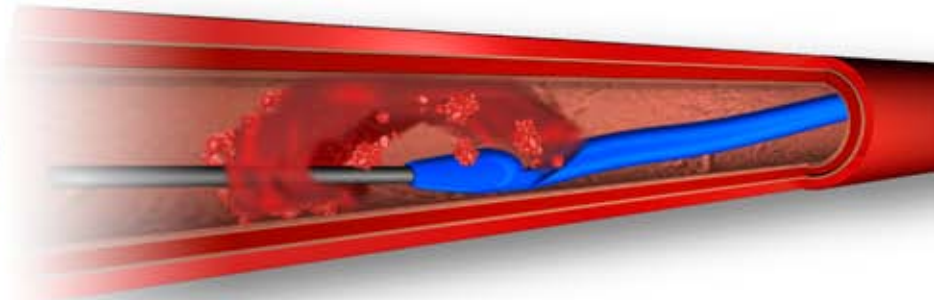


*Roll clamp towards catheter to  
increase aspiration*

Aspiration for large vessels

# **PRONTO® .035"** Extraction Catheter

Indicated for the rapid removal of emboli from arteries or veins greater than 4mm.



## ■ Tapered Silva Tip

Smooth introduction and passage through the vessel  
Designed to prevent vessel wall interference with thrombus aspiration

## ■ Braid Reinforced Extrusion

Resists kinking over entire length of catheter  
Increases tip control

## ■ 122° Angle with 6cm Tip

Enhances steerability and vessel selection  
Rotational control of aspiration lumen in large vessels

## ■ Easy Over-The-Wire Delivery

Compatible with standard 0.035" guidewires  
10F sheath compatible



# PRONTO® .035"

## Extraction Catheter

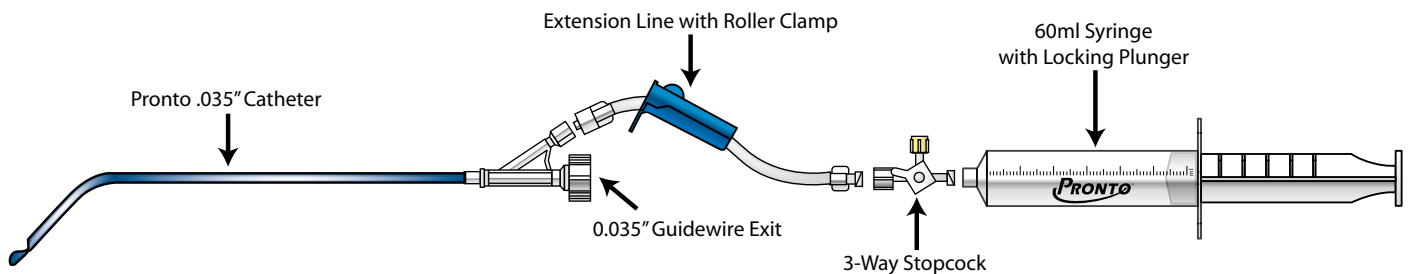
The Pronto .035" catheter is indicated for the removal/aspiration of embolic material (thrombus/debris) from vessels of the arterial system, the removal/aspiration of embolic material (thrombus/debris) from vessels of the deep venous system and to infuse/deliver diagnostic or therapeutic agents.



Model	Description	Box Quantity
5040	Pronto .035" Extraction Catheter	1

### Specifications:

- Introducer sheath compatibility:  $\geq 10F$  (3.35mm min. I.D.)
- Guidewire compatibility:  $\leq 0.035"$
- Working length: 115cm
- Marker band: Located  $\approx 4mm$  from the distal tip
- Syringe: One locking 60ml polycarbonate



Please see the Instructions for Use for a complete listing of the indications, contraindications, warnings and precautions.

CAUTION: Federal Law (U.S.A.) restricts this device to sale by or on the order of a physician.

U.S. and International patents pending.  
Pronto is a registered trademark of Vascular Solutions, Inc.

©2012 Vascular Solutions, Inc. All rights reserved. ML1752 Rev. B 04/12



**Vascular Solutions, Inc.**  
6464 Sycamore Court  
Minneapolis, Minnesota 55369 USA

Customer Service:  
United States: 888.240.6001  
International: (001) 763.656.4298  
customerservice@vasc.com

[www.vasc.com](http://www.vasc.com)