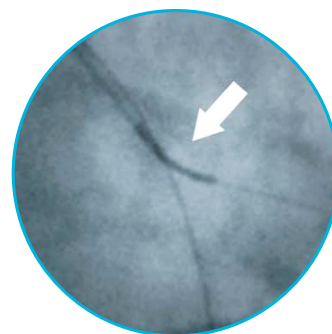


Venture[®] 0.014" Catheters

Controlled Steerability Through Complex Anatomy

Deflectable Tip Plus Torquable Shaft Equals Excellent Steerability

The Venture® 0.014" Catheter's tip can be deflected up to 90° to precisely direct guidewires around bends and tortuosity during complex cases.

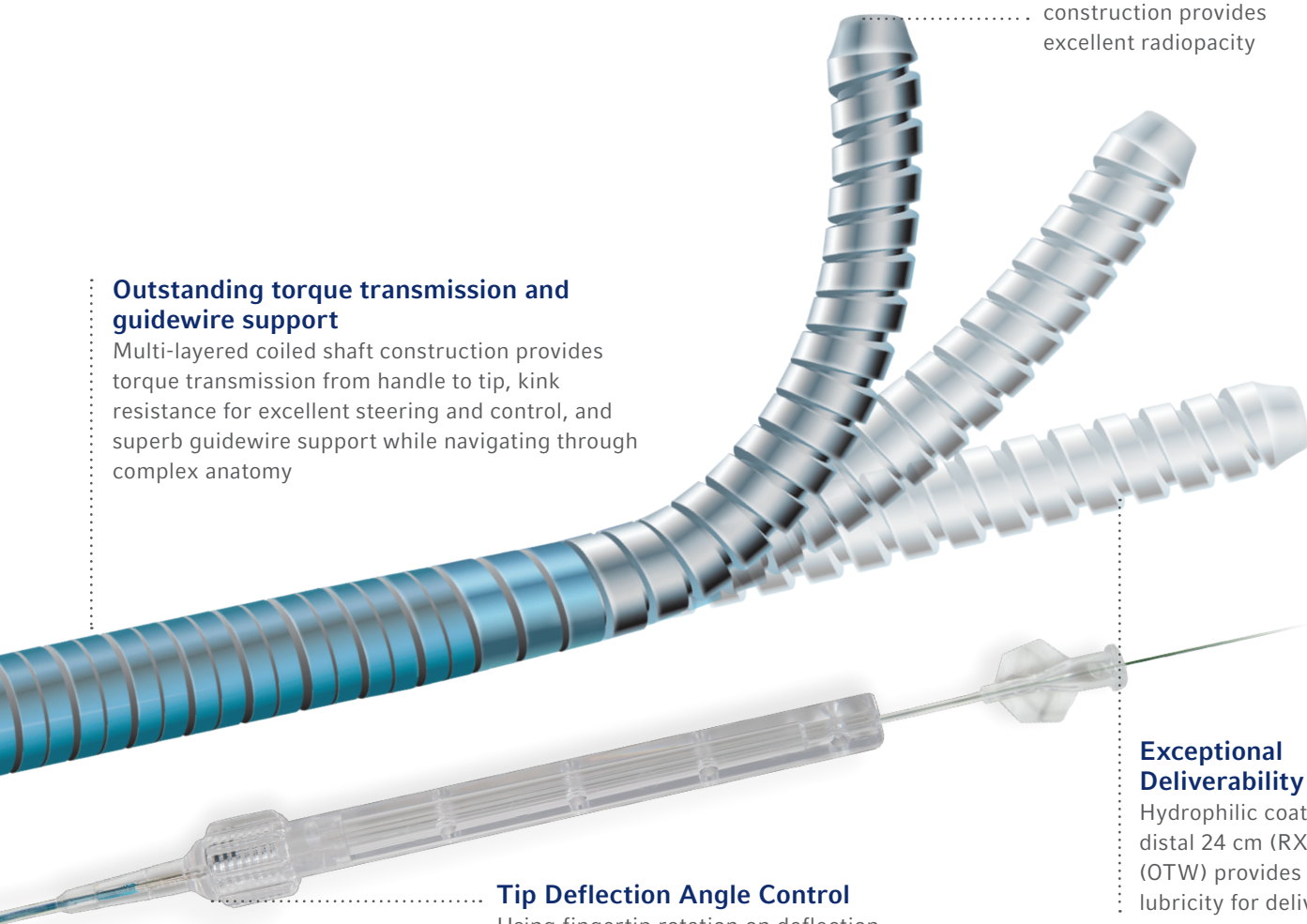


Excellent Visibility Under Fluoroscopy

8 mm distal tip platinum construction provides excellent radiopacity

Outstanding torque transmission and guidewire support

Multi-layered coiled shaft construction provides torque transmission from handle to tip, kink resistance for excellent steering and control, and superb guidewire support while navigating through complex anatomy

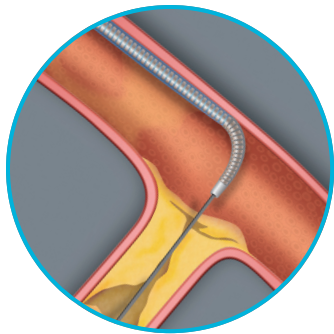


Tip Deflection Angle Control

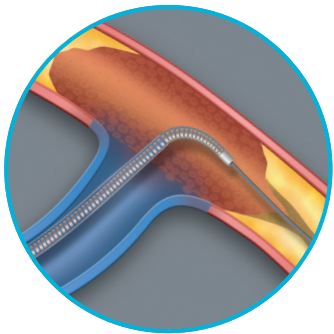
Using fingertip rotation on deflection knob of proximal handle allows for control of tip deflection angle

Exceptional Deliverability

Hydrophilic coating on distal 24 cm (RX) or 45 cm (OTW) provides excellent lubricity for delivery

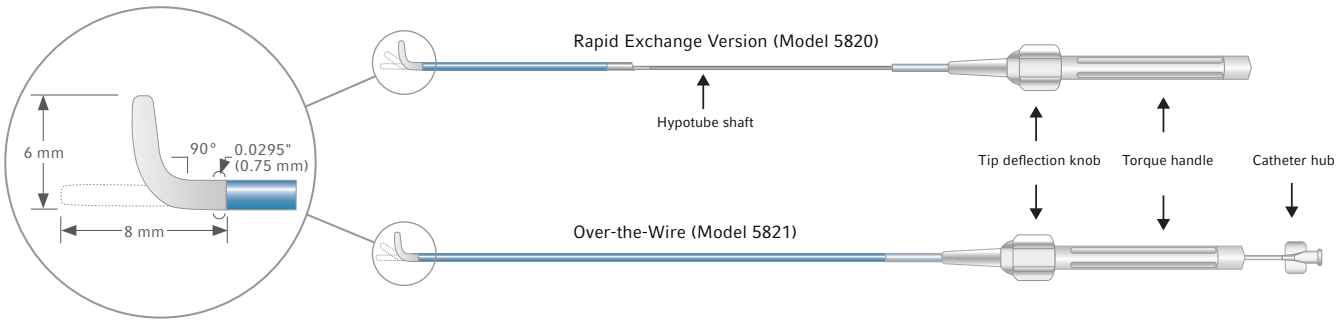


Directed backup support for crossing ostial lesions



Angulated take offs and tortuous anatomy

Venture® 0.014" Catheter | Coronary and Peripheral



Ordering Information

Venture® 0.014" Catheters

The 0.014" Venture Catheter is indicated for directing, steering, controlling and supporting a guidewire to access discrete regions of the coronary and peripheral vasculature. The OTW version may also be used for manual delivery of saline solution or diagnostic contrast agents.

| MODEL | GUIDEWIRE COMPATIBILITY | GUIDE CATHETER COMPATIBILITY | RAPID EXCHANGE SEGMENT | WORKING LENGTH | RADIOPAQUE TIP | HYDROPHILIC COATING | DEFLECTABLE TIP O.D. | MAX SHAFT O.D. | I.D. |
|--------------------------|-------------------------|------------------------------|------------------------|----------------|----------------|---------------------|----------------------|---|------------------|
| 5820–Rapid Exchange (RX) | ≤0.014" (0.36 mm) | 6 Fr. (1.7 mm) | 30 cm | 144.5 cm | 8 mm | Distal 24 cm | 0.0295" (0.75 mm) | 4.1 Fr. (0.054" / 1.37 mm) Transition Collar O.D. | 0.015" (0.38 mm) |
| 5821–Over-the-Wire (OTW) | ≤0.014" (0.36 mm) | 6 Fr. (1.7 mm) | N/A | 139.5 cm | 8 mm | Distal 45 cm | 0.0295" (0.75 mm) | 4 Fr. (0.052" / 1.32 mm) Proximal O.D. | 0.015" (0.38 mm) |

Packaged in quantities of 1 unit per box. Minimum vessel diameter is 1.5 mm.

Teleflex is a global provider of medical technologies designed to improve the health and quality of people's lives. We apply purpose driven innovation – a relentless pursuit of identifying unmet clinical needs – to benefit patients and healthcare providers. Our portfolio is diverse, with solutions in the fields of vascular and interventional access, surgical, anesthesia, cardiac care, urology, emergency medicine and respiratory care. Teleflex employees worldwide are united in the understanding that what we do every day makes a difference. For more information, please visit teleflex.com.

Teleflex is the home of Arrow®, Deknatel®, Hudson RCI®, LMA®, Pilling®, Rüschi®, and Weck® – trusted brands united by a common sense of purpose.

Corporate Office

Phone +1 610 225 6800, 550 E. Swedesford Road, Suite 400, Wayne, PA 19087, USA

Regional Offices

United States: Phone +1 919 544 8000, Toll Free 866 246 6990, cs@teleflex.com, 3015 Carrington Mill Boulevard, Morrisville, NC 27560, USA

Latin America: Phone +1 919 433 4999, la.cs@teleflex.com, 3015 Carrington Mill Boulevard, Morrisville, NC 27560, USA

International: Phone +353 (0)9 06 46 08 00, orders.intl@teleflex.com, Teleflex Medical Europe Ltd., IDA Business and Technology Park, Dublin Road, Athlone, Co Westmeath, Ireland

Australia 1300 360 226

Austria +43 (0)1 402 47 72

Belgium +32 (0)2 333 24 60

Canada +1 (0)800 387 9699

China (Shanghai) +86 (0)21 6163 0965

China (Beijing) +86 (0)10 6418 5699

Czech Republic +420 (0)495 759 111

France +33 (0)5 62 18 79 40

Germany +49 (0)7151 406 0

Greece +30 210 67 77 717

India +91 (0)44 2836 5040

Italy +39 0362 58911

Japan +81 (0)3 6632 3600

Korea +82 2 536 7550

Mexico +52 55 5002 3500

Netherlands +31 (0)88 00 215 00

New Zealand 0800 601 100

Poland +48 22 4624032

Portugal +351 22 541 90 85

Singapore (SEA non-direct sales countries) +65 6439 3000

Slovak Republic +421 (0)3377 254 28

South Africa +27 (0)11 807 4887

Spain +34 918 300 451

Switzerland +41 (0)31 818 40 90

United Kingdom +44 (0)1494 53 27 61

For more information, please visit teleflex.com.

Please see the Instructions for Use for a complete listing of the indications, contraindications, warnings and precautions. CAUTION: Federal (USA) law restricts this device to sale by or on the order of a physician.

Teleflex, the Teleflex logo, Venture, Arrow, Deknatel, Hudson RCI, LMA, Pilling, Rüschi, and Weck are trademarks or registered trademarks of Teleflex Incorporated or its affiliates, in the U.S. and/or other countries.

Information in this material is not a substitute for the product Instructions for Use. Not all products may be available in all countries. Please contact your local representative. Revised: 03/2019.

© 2019 Teleflex Incorporated. All rights reserved. MC-004083 - Rev 0.1